



Metcalfe & Company, inc.

Brian. P. Metcalfe
251-432-2600
brian@metcalfeco.com
Post Office Box 2903, Mobile, AL 36652

The Xante Center

2800 Dauphin Street, Mobile, AL

FOR LEASE

SIZE:

- Approximately 80,000 square feet total

AVAILABLE:

- Approximately 6,637 total square feet available on the first floor
- 2,105 square feet
- 4,532 square feet
- 8,334 square feet

LEASE RATE:

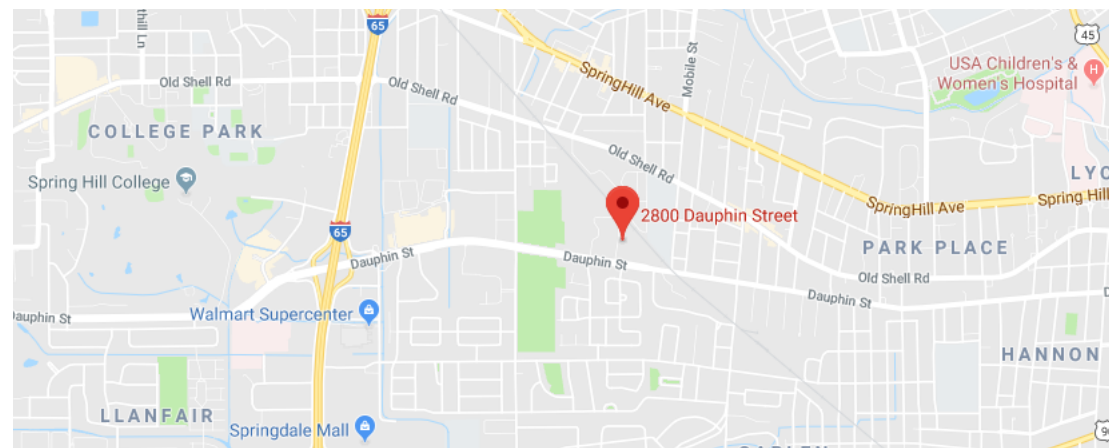
- \$17.50 per leasable square feet (full service rate, including parking)

PARKING:

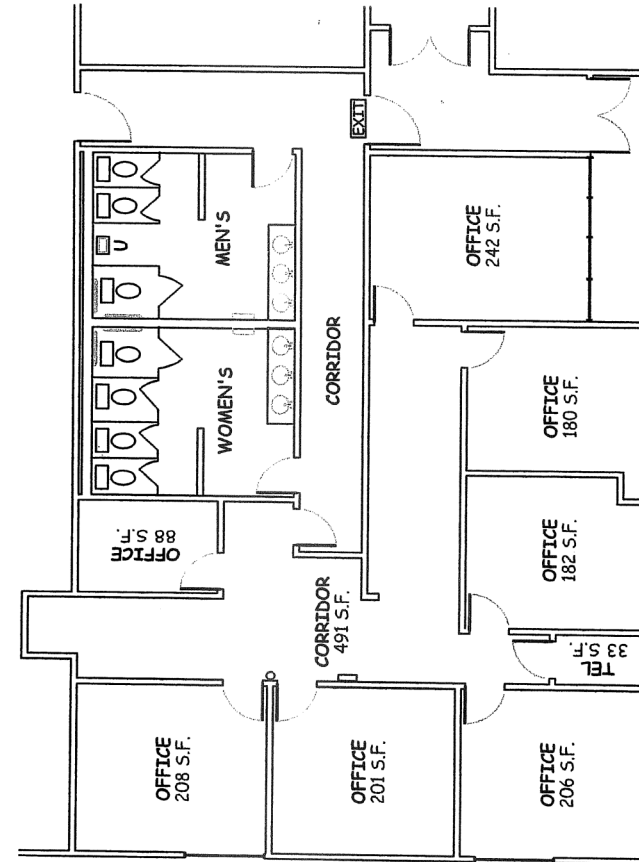
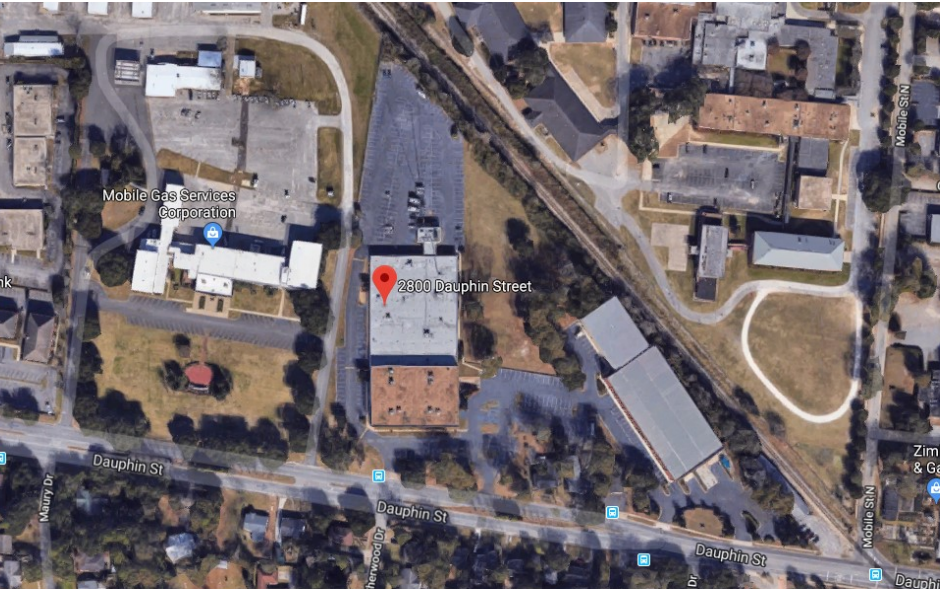
- Approximately 4 spaces per 1000 square feet, subject to verification

BUILDING AMENITIES:

- Access to building's UPS system and emergency generator. Available capacity subject to verification



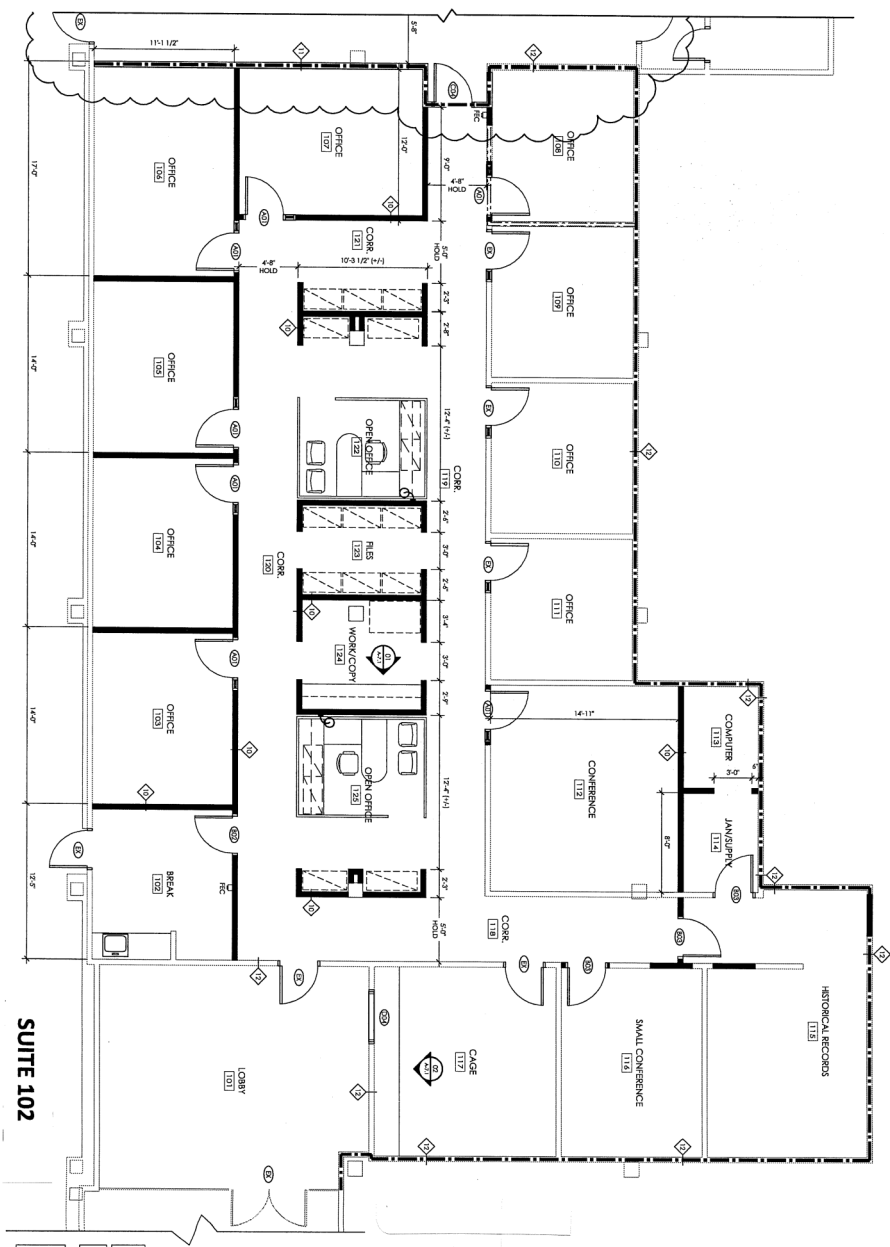
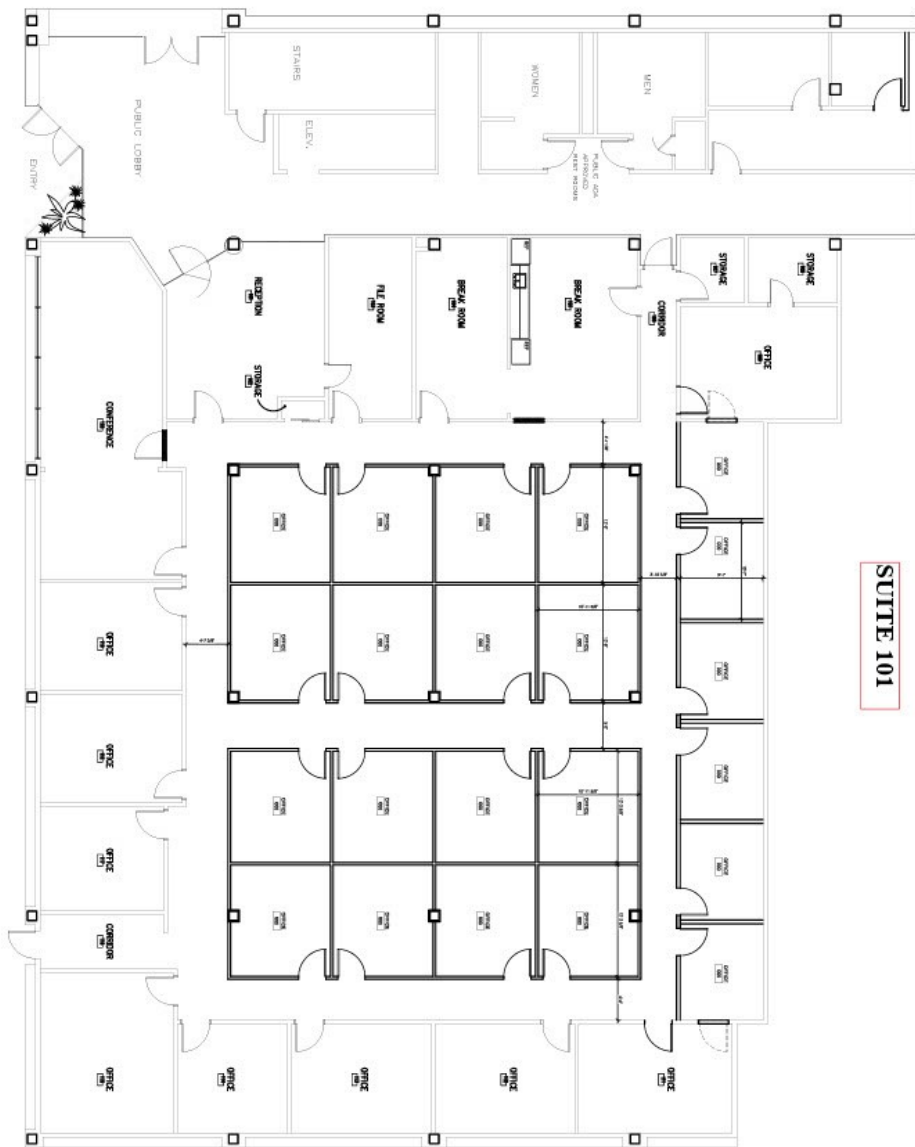
The information provided for by the company is subject to errors, omissions, changes, prior sale or lease and withdrawal from the market without notice by the owner. This information has been gathered from sources that are deemed to be reliable, however there is no warranty or guarantee to its accuracy or validity. You are hereby advised to independently verify the information presented herein.



TOTAL AREA
2105 LEASABLE SF

2800 DAUPHIN STREET
MOBILE, AL

The information provided for by the company is subject to errors, omissions, changes, prior sale or lease and withdrawal from the market without notice by the owner. This information has been gathered from sources that are deemed to be reliable, however there is no warranty or guarantee to its accuracy or validity. You are hereby advised to independently verify the information presented herein.



The information provided for by the company is subject to errors, omissions, changes, prior sale or lease and withdrawal from the market without notice by the owner. This information has been gathered from sources that are deemed to be reliable, however there is no warranty or guarantee to its accuracy or validity. You are hereby advised to independently verify the information presented herein.